

arnica™

MERLIN



Instruction Manual

USER'S MANUAL

Thank you for purchasing the Merlin 2-in-1 vacuum cleaner, please read these instructions before use.

CONTENTS

1. Safety Rules
2. Description of appliance
3. Technical Specifications
4. Assembly and Preparation for use
5. Use
6. Cleaning and Maintenance

1. SAFETY RULES

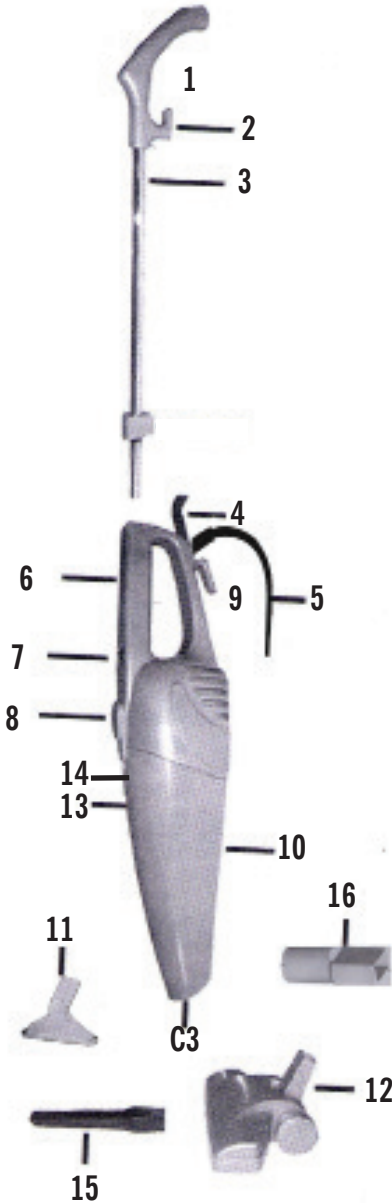
- This appliance is not suitable for those with physical, sensorial or mental disabilities; Users lacking experience and knowledge of the appliance, or those who have not been given the user's instructions, must be supervised by a person responsible for their safety.
- Children must be supervised at all times to ensure they do not play with the appliance.
- Before plugging your appliance into the mains socket, ensure that the voltage shown on the rating plate matches the local voltage supply.
- Make sure that your appliance is certainly unplugged before moving, cleaning or servicing it.
- Do not pull the power cord to unplug the appliance.
- Avoid power cord being closely pressed, excessively bent and pass through places with sharp edges.
- Do not use the appliance if the power cord or the plug appears to be damaged. Apply to the closest authorised service centre to have the power cable or the plug to be repaired or replaced.
- Never leave the appliance unattended when it is connected to the power supply. Keep away from children.
- Pay particular attention when cleaning stairs.
- Do not try to use appliance if it is damaged.
- Do not aim the suction end towards humans and pets.
- Do not immerse the appliance body in water and prevent it from any spilling water.
- Acids, acetone and solvents cause damage and corruptions on the appliance. Do not use such agents while cleaning or wiping your appliance.
- Use only original parts and accessories for the appliance.
- Contact to the UK Distributor for repair and spare parts.

WARNING:

1. Do not use the appliance to suck such flammable liquids as gasoline, thinner, alcohol, kerosene and the like, dusts and liquids with temperatures more than 60 °C and substances that pose fire risk, and wastes hazardous for health.
2. The appliance you purchased has been designed for home use only and must not be used for commercial or industrial purposes.

2. DESCRIPTION OF THE APPLIANCE

1. Extension Pipe Holder
2. Cord Hook
3. Extension Pipe
4. Extension Pipe Locking Latch
5. Power Cord
6. Handle
7. On/Off Switch
8. Latch for Opening Dust Bag
9. Wrap-Around Cable Hook
10. Dust Bag
11. Crevice Tool
12. Floor Brush
13. HEPA Filter



- 14. Cloth Filter
- 15. Passpartù Brush
- 16. Nozzle and Small Dust Brush

3. TECHNICAL SPECIFICATIONS

Voltage	: 230V~, 50Hz
Power (IEC)	: Max. 1000W
Electrical Insulation	: Class II
Length of Power Cord	: 6 meters.
Mark of Conformity	: CE

4. PREPARATION FOR USE

WARNING: Unplug the power cord before attempting to prepare appliance for use.

Installing Extension Pipe to the Body:

- Open the latch for extension pipe located on the handle of electric vacuum cleaner and push the extension pipe into the handle until it is fitted firmly.
- Fix the extension pipe for the cleaner in its place by means of locking latch.



Installing Crevice Tool and Floor Brush to the Cleaner Body:

- Install crevice tool or floor brush by pushing them into the suction hose end.

Installing Nozzle and Brush to the Body:

- In order for the small dust brush to be installed to the hose end, push its nozzle into the suction port first and later attach the small dust brush onto the nozzle.

Winding and Unwinding the Power Cord:

- Use cord hook or wrap-around cable hook for winding the power cord

5. ASSEMBLY & OPERATING THE VACUUM CLEANER

Dry Cleaning:

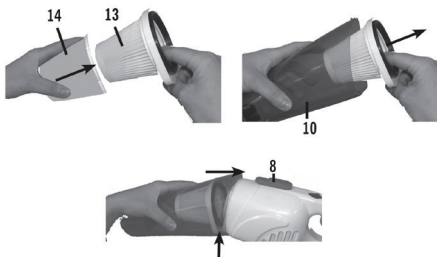
- Attach the most proper accessories for the task you planned.
- Following accessories can be employed for a proper cleaning:
 - Floor Brush for carpet, rug and the firm grounds.
 - Crevice Tool for cleaning dust, crumbs and the like in such narrow places hard to access as radiators, drawers and so on.

- Nozzle alone (without brush) for cleaning soil, crumbs, feather and so on
- Small Dust Brush for cleaning surfaces such as shelves, books, cloths, electronic gadgets, lampshades, curtains and so on.

- Plug the power cord to mains and operate the vacuum cleaner pressing On/Off Switch.

6. CLEANING & MAINTENANCE OF VACUUM CLEANER

- Make sure that your appliance is certainly unplugged before starting any cleaning or maintenance works.
- Do not immerse the power plug, cord or appliance in water or any other liquid to prevent potential electric shock.
- Clean your vacuum cleaner after each use for hygienic purposes and to extend its service life.
- Cleanliness of the HEPA filter must be checked periodically. It must be washed with warm water if required.



- It is necessary to use only original accessories and parts in order to guarantee effective cleaning and long service life. Procure accessories and parts from the closest authorized service centre when required.

WARNING:

Warranty deed must be absolutely ratified by the authorized dealer as of the date of sale (Its stamp and date of sale)

2 years Guarantee

Thank you for choosing the Merlin 2-in-1 vacuum cleaner. This product is covered for 2 years against a manufacturer's fault. To register for your guarantee, please send back the customer tear-off portion of the guarantee slip provided at point of sale to:

L.C.C. Show & TV Promotions
P.O.Box 185
Borehamwood
Herts WD6 3XL

This guarantee only applies to customers within the UK and Eire.

No claims will be considered if not registered.